

SPICE-Equivalent circuit model library

Table 1. Equivalent circuit data

Part Number	L (μ H)	F _{res} (MHz)	C1 (pF)	R1 (Ω)	R2 Nominal DCR of winding (Ω)
DR125-R47-R	0.456	137.2	2.95	5352.42	0.0018
DR125-1R0-R	0.894	95.0	3.14	7295.27	0.0024
DR125-1R5-R	1.48	72.2	3.28	9199.13	0.0029
DR125-2R2-R	2.2	58.2	3.40	11039.28	0.0045
DR125-3R3-R	3.08	48.4	3.51	12887.23	0.0063
DR125-4R7-R	5.27	36.1	3.68	16499.06	0.0105
DR125-6R8-R	6.59	32.0	3.76	18285.78	0.0123
DR125-8R2-R	8.05	28.7	3.82	20048.98	0.0176
DR125-100-R	9.7	25.9	3.89	21844.46	0.0189
DR125-150-R	15	20.4	4.04	26694.90	0.0298
DR125-180-R	17.7	18.7	4.10	28806.73	0.0377
DR125-220-R	22	16.6	4.19	31837.63	0.0396
DR125-330-R	33	13.3	4.34	38365.66	0.0505
DR125-470-R	47	11.0	4.48	45143.09	0.074
DR125-560-R	55.24	10.0	4.55	48625.37	0.102
DR125-680-R	68	9.0	4.63	53503.27	0.101
DR125-820-R	86.9	7.8	4.74	59892.90	0.128
DR125-101-R	100	7.3	4.80	63889.02	0.17
DR125-151-R	150	5.8	4.97	76988.92	0.248
DR125-221-R	216.8	4.8	5.14	91203.92	0.384
DR125-331-R	330	3.8	5.34	110647.77	0.482
DR125-471-R	470	3.1	5.51	130194.09	0.718
DR125-681-R	680	2.6	5.70	154305.12	1.1
DR125-821-R	828	2.3	5.80	168935.22	1.49
DR125-102-R	1000	2.1	5.90	184257.95	1.69
DR125-472-R	4720	0.9	6.79	376218.00	7.53
DR125-124-R	120630	0.2	9.08	1670689.32	150

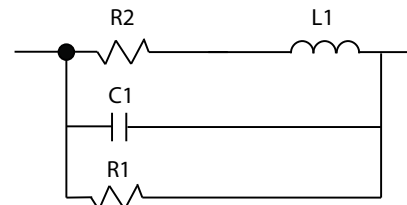


Figure 1. Equivalent circuit

Disclaimer

The data provided is for reference and is intended for evaluation purposes only. Users should verify all intended results in the end application.

Eaton
Electronics Division
 1000 Eaton Boulevard
 Cleveland, OH 44122
 United States
www.eaton.com/electronics

© 2018 Eaton
 All Rights Reserved
 Printed in USA
 Publication No. DR125 Spice
 April 2018